



House

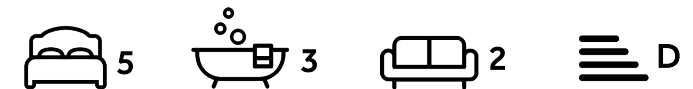
Leeside Crescent London NW11 0DA

£895 Per week

Council Tax Band: F

FEATURES

- Open Plan Kitchen/Reception Room
- Family Room
- 5 Double Bedrooms
- 3 Bathrooms
- Private Garden
- Permit Parking



ADN
RESIDENTIAL



5 Bedroom House located in London

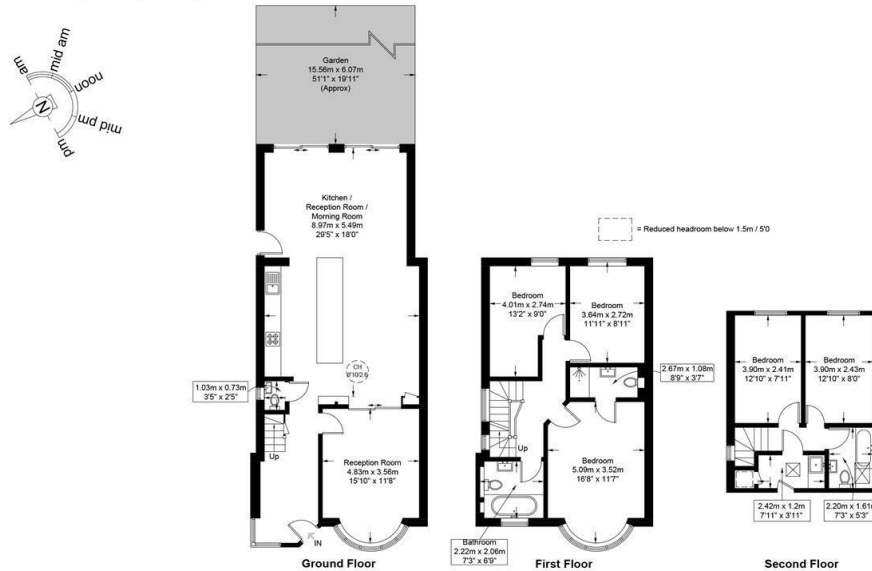
A bright and spacious five double bedroom family home located in the centre of Temple Fortune and 0.1m from the local amenities that Finchley road has to offer. This fantastic property offers over 1700 sq ft of well planned accommodation and comprises, a generous open plan kitchen/family room leading onto a private garden, second reception room, principal bedroom with bay window and en-suite shower room, four further double bedrooms, 2 family bathrooms, utility room and a guest W.C. Further benefits include double glazed windows, good storage and modern fixtures and fittings throughout.



Leeside Crescent, NW11

Approximate Gross Internal Area = 1731 sq ft / 160.8 sq m

Restricted Height = 4 sq ft / 0.4 sq m



Energy Efficiency Rating		
	Current	Potential
Very energy efficient - lower running costs		
(92 plus) A		83
(81-91) B		
(69-80) C		
(55-68) D		
(39-54) E		
(21-38) F		67
(1-20) G		
Not energy efficient - higher running costs		
England & Wales		EU Directive 2002/91/EC

Call us on

020 7407 5155

info@adnresidential.co.uk

www.adnresidential.co.uk



This plan is for layout guidance only and is not drawn to scale unless stated. All dimensions, including windows, doors, and the Total Gross Internal Area (GIA), are approximate. For precise measurements, please consult a qualified architect or surveyor before making any decisions based on this plan.



Agents Note: Whilst every care has been taken to prepare these particulars, they are for guidance purposes only. All measurements are approximate and are for general guidance purposes only and whilst every care has been taken to ensure their accuracy, they should not be relied upon and potential buyers are advised to recheck the measurements.

